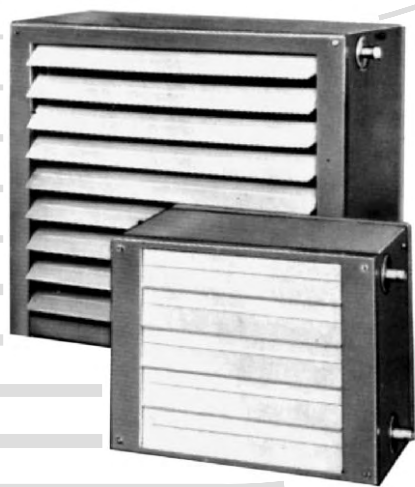


HEATER
KALORIFER
КАЛОРИФЕР

H 11.000



HVAC
KLIMA Co.

ABOUT HEATERS

OPŠTE O KALORIFERIMA

ОБЩЕЕ О КАЛОРИФЕРАХ

CHARACTERISTICS:

- compact construction
- easy mounting and demounting
- easy maintenance
- possibility of regulation

Heater with copper aluminium heat exchanger and axial fan serves for central and local heating of working premises. As heating medium may be employed:

warm water, hot water, saturated steam and heated medium is fresh circulating or mixed (fresh and circulating) air.

When projecting heating by means of calorifier, a considerable care must be taken of their correct arrangement. In a view of their using and heating of certain space, the best results are achieved by appropriate arrangement and housing. Calorifier should be installed high enough that the furniture and a room equipment could not interfere an air flow.

KARAKTERISTIKE:

- kompaktna konstrukcija
- laka montaža i demontaža
- lako održavanje
- mogućnost regulacije

Kalorifer sa bakar- aluminijum razmenjivačem toplote i aksijalnim ventilatorom služi za lokalno i centralno grejanje radnog prostora.

Kao grejni medijum može biti: topla voda, vrela voda, zasićena vodena para a grejani medijum sveži, optičajni ili mešani (svež i optičajni) vazduh.

Kod projektovanja grejanja pomoću kalorifera mora se pokloniti posebna pažnja njihovom međusobnom rasporedu. Pravilnim rasporedom i smeštajem postižu se najbolji efekti u pogledu njihovog korišćenja i zagrevanja određenog prostora. Kalorifer se mora postaviti toliko visoko da nameštaj ili oprema u prostoriji ne predstavlja prepreku kretanju vazduha.

ХАРАКТЕРИСТИКИ:

- компактная конструкция
- несложные сборка и разборка
- несложное обслуживание
- возможность регуляции

Калорифер с медно-алюминиевым разменивателем теплоты и аксиальным вентилятором служит для центрального локального обогрева рабочих помещений. В качестве обогревательного медиума используется: теплая вода, горячая вода, насыщенный водяной пар, а обогревающийся медиум это свежий, циркуляционный или смешанный (свежий и циркуляционный) воздух.

При проектировании отопления при помощи калорифера нужно обратить внимание их обоюдному распределению. Правильным распределением и размещением достигаются лучшие результаты их использования и сагореванию определенного при наращения. Калорифер нужно поставить настально високо, чтобы мебель и вещи в наращения не представляли преграду движению воздуха. Приводил несколько примеров правильного монтажа.

Preduzeće za proizvodnju, inženjering, projektovanje, konsalting, zastupanje i marketing d.o.o.

YU-Beograd, Borivoja Stevanovića 43 Tel/Fax: /011/4897 425



HEATER KALORIFER КАЛОРИФЕР

H 11.000

TIP KALORIFERA:	H 11.112		H 11.113		TIP KALORIFERA:	H 11.212		H 11.213			
KOLIČINA VAZDUHA:	1100m ³ /h		920m ³ /h		KOLIČINA VAZDUHA:	1100m ³ /h		920m ³ /h			
TOPLA VODA t _u (°C)	Q (kW)	t _i (°C)	Q (kW)	t _i (°C)	PARA	t _u (°C)	Q (kW)	t _i (°C)	Q (kW)	t _i (°C)	
80/60	-15	12.66	15.2	16.45	31.8	1.1 bara 102,3°C	-15	18.07	28.0	21.80	47.2
	-10	12.56	20.5	15.32	34.5		-10	17.23	31.8	20.80	50.3
	-5	11.70	23.9	14.21	37.0		-5	16.40	35.6	19.70	53.4
	0	10.82	27.3	13.11	39.5		0	15.50	39.2	18.70	56.3
	+5	9.95	30.5	12.02	41.9		+5	14.70	42.8	17.60	59.2
	+10	9.09	33.7	10.96	44.2		+10	13.90	46.4	16.60	62.0
	+15	8.24	36.9	9.90	46.5		+15	13.10	49.9	15.60	64.7
90/70	-15	14.43	19.4	18.57	37.9	1.5 bara 111.4°C	-15	19.50	31.5	23.60	52.1
	-10	13.54	22.9	17.45	40.7		-10	18.60	35.3	22.50	55.3
	-5	12.68	26.4	16.33	43.3		-5	17.80	39.1	21.40	58.4
	0	12.52	31.6	15.22	45.9		0	17.70	42.8	20.40	61.4
	+5	11.65	34.9	14.11	48.3		+5	16.10	46.5	19.30	64.4
	+10	10.80	38.2	13.03	50.7		+10	15.30	50.1	18.30	67.2
	+15	9.93	41.4	11.96	53.0		+15	14.50	53.6	17.30	70.0
110/70	-15	16.26	23.7	20.99	44.8	2 bara 120.2°C	-15	21.00	35.0	25.30	57.1
	-10	15.36	27.3	19.84	47.6		-10	20.10	38.8	24.20	60.4
	-5	14.46	30.8	18.69	50.3		-5	19.30	42.7	23.10	63.5
	0	13.58	34.2	17.56	52.9		0	18.40	46.4	22.10	66.6
	+5	12.71	37.6	16.43	55.4		+5	17.60	50.1	21.00	69.6
	+10	11.83	40.9	15.31	57.8		+10	16.70	53.8	20.00	72.5
	+15	10.96	44.1	14.21	60.2		+15	15.90	57.3	19.00	75.3
110/90	-15	17.95	27.8	22.83	50.0	3 bara 133.5°C	-15	23.10	40.0	27.90	64.4
	-10	17.06	31.4	21.68	52.9		-10	22.20	44.0	26.80	67.7
	-5	16.18	35.0	20.52	55.7		-5	21.40	47.9	25.70	70.9
	0	15.29	38.5	19.38	58.4		0	20.50	51.7	24.60	74.1
	+5	14.40	42.0	18.26	61.0		+5	19.70	55.5	23.50	77.4
	+10	13.53	45.4	17.17	63.6		+10	18.80	59.2	22.40	80.1
	+15	12.68	48.7	16.06	66.1		+15	18.00	62.8	21.40	83.1
130/90	-15	19.79	32.1	24.29	54.2	5 bara 151.2°C	-15	26.10	47.1	31.40	74.5
	-10	18.87	35.8	23.12	57.1		-10	25.20	51.2	30.30	78.0
	-5	17.97	39.5	21.96	60.0		-5	24.30	55.2	29.20	81.3
	0	17.09	43.1	20.81	62.7		0	23.40	59.1	28.00	84.6
	+5	16.18	46.5	20.61	68.2		+5	22.50	62.9	27.00	87.7
	+10	15.30	50.0	19.48	70.9		+10	21.70	66.8	25.90	90.9
	+15	14.42	53.3	18.39	73.4		+15	20.90	70.5	24.80	93.9


HEATER
KALORIFER
КАЛОРИФЕР
H 11.000

TIP KALORIFERA:	H 11.122		H 11.123		TIP KALORIFERA:	H 11.222		H 11.223		
KOLIČINA VAZDUHA:	1700m ³ /h		1350m ³ /h		KOLIČINA VAZDUHA:	1700m ³ /h		1350m ³ /h		
TOPLA VODA t _u (°C)	Q (kW)	t _i (°C)	Q (kW)	t _i (°C)	PARA	t _u (°C)	Q (kW)	t _i (°C)	Q (kW)	t _i (°C)
80/60	-15	18.70	13.8	23.70	31.1	-15	25.90	24.9	31.30	43.7
	-10	17.40	17.4	22.10	33.8	-10	24.70	28.8	29.80	46.9
	-5	16.20	20.9	20.60	36.5	-5	23.50	32.6	28.30	50.1
	0	15.00	24.4	19.00	39.0	0	22.30	36.4	26.80	53.2
	+5	13.70	27.8	17.50	41.5	+5	21.10	40.1	25.40	56.2
	+10	12.50	31.1	16.00	44.0	+10	20.00	43.8	23.90	59.2
	+15	11.30	34.4	14.40	46.3	+15	18.80	47.4	22.50	62.0
90/70	-15	21.20	17.7	26.10	35.7	-15	28.00	28.1	33.80	48.4
	-10	20.00	21.4	25.10	39.7	-10	26.70	32.0	32.30	51.7
	-5	18.70	24.9	23.50	42.5	-5	25.50	35.9	30.80	54.9
	0	17.50	28.5	22.00	45.1	0	24.40	39.7	29.30	58.0
	+5	16.20	31.9	20.40	47.7	+5	23.20	43.5	27.80	61.1
	+10	15.00	35.3	18.90	50.2	+10	22.00	47.2	26.30	64.1
	+15	13.70	38.7	17.40	52.6	+15	20.80	50.9	24.90	67.0
110/70	-15	22.80	19.4	28.90	41.0	-15	30.00	31.3	36.30	53.0
	-10	22.50	25.4	27.20	43.9	-10	28.80	35.3	34.80	56.4
	-5	21.20	29.0	25.60	46.7	-5	27.60	39.2	33.30	59.7
	0	20.00	32.6	24.00	49.4	0	26.40	43.1	31.70	62.9
	+5	18.70	36.1	22.40	51.9	+5	25.20	46.9	30.20	66.0
	+10	17.40	39.5	20.90	54.5	+10	24.0	50.7	28.80	69.1
	+15	16.20	42.8	19.35	56.9	+15	22.90	54.4	27.30	72
110/90	-15	26.20	25.5	32.20	47.5	-15	33.10	36.1	40.00	59.9
	-10	25.00	29.2	30.50	50.4	-10	31.90	40.1	38.50	63.4
	-5	23.70	32.9	28.90	53.3	-5	30.70	44.1	36.90	66.7
	0	22.40	36.6	27.30	56.1	0	29.40	48.0	35.40	70.0
	+5	21.10	40.1	25.70	58.8	+5	28.20	51.9	33.80	73.2
	+10	19.90	43.7	24.70	62.6	+10	27.00	55.7	32.30	76.4
	+15	18.60	47.1	23.10	65.1	+15	25.80	59.5	30.80	79.4
130/90	-15	27.50	27.4	35.00	53.0	-15	37.40	42.7	45.10	69.5
	-10	26.20	31.2	33.40	56.1	-10	36.20	46.8	43.50	73.1
	-5	25.00	35.0	31.70	59.0	-5	34.90	50.9	41.90	76.5
	0	23.70	38.6	30.10	61.9	0	33.70	54.9	40.30	79.9
	+5	22.90	42.2	28.50	64.6	+5	32.40	58.9	38.80	83.3
	+10	22.40	47.9	26.90	67.3	+10	31.20	62.8	37.30	86.5
	+15	21.10	51.4	25.30	69.9	+15	30.00	66.6	35.70	89.7

Preduzeće za proizvodnju, inženjering, projektovanje, konsalting, zastupanje i marketing d.o.o.

YU-Beograd, Borivoja Stevanovića 43 Tel/Fax: /011/4897 425



HEATER KALORIFER КАЛОРИФЕР

H 11.000

TIP KALORIFERA:	H 11.132		H 11.133		TIP KALORIFERA:	H 11.232		H 11.233			
KOLIČINA VAZDUHA:	2750m ³ /h		2250m ³ /h		KOLIČINA VAZDUHA:	2750m ³ /h		2250m ³ /h			
TOPLA VODA t _u (°C)	Q (kW)	t _i (°C)	Q (kW)	t _i (°C)	PARA	t _u (°C)	Q (kW)	t _i (°C)	Q (kW)	t _i (°C)	
80/60	-15	30.10	13.7	38.30	29.6	1.1 bara 102,3°C	-15	42.30	25.4	51.00	44.4
	-10	28.10	17.4	36.40	33.2		-10	40.40	29.2	48.50	47.6
	-5	26.10	20.9	33.80	36.0		-5	38.40	33.0	46.10	50.8
	0	25.00	25.2	31.30	38.6		0	36.50	36.8	43.70	53.8
	+5	23.00	28.6	28.80	41.1		+5	34.60	40.5	41.30	56.8
	+10	21.00	32.0	26.30	43.6		+10	32.70	44.2	38.90	59.8
	+15	19.10	35.3	23.80	46.0		+15	30.81	47.8	36.60	62.6
90/70	-15	34.20	17.6	43.30	35.4	1.5 bara 111.4°C	-15	45.70	28.6	55.00	49.1
	-10	32.20	21.2	40.70	38.3		-10	43.80	32.5	52.60	52.4
	-5	30.20	24.9	38.10	41.1		-5	41.80	36.4	50.10	55.6
	0	28.10	28.4	36.10	44.6		0	39.80	40.2	47.70	58.7
	+5	26.10	31.9	33.60	47.2		+5	37.90	43.9	45.20	61.8
	+10	25.00	36.1	31.10	49.7		+10	36.00	47.6	42.90	64.8
	+15	23.00	39.5	28.60	52.2		+15	34.10	51.3	40.50	67.6
110/70	-15	37.60	20.8	47.50	40.4	2 bara 120.2°C	-15	49.20	31.9	59.10	53.9
	-10	35.50	24.5	44.90	43.3		-10	47.20	35.8	56.60	57.2
	-5	33.40	28.1	42.30	46.1		-5	45.20	39.7	54.10	60.4
	0	31.40	31.6	40.90	50.4		0	43.20	43.6	51.60	63.6
	+5	29.30	35.1	38.30	53.0		+5	41.30	47.4	49.20	66.7
	+10	27.30	38.6	35.70	55.6		+10	39.30	51.1	46.80	69.8
	+15	25.30	42.0	33.10	58.1		+15	37.40	54.8	44.40	72.7
110/90	-15	42.30	25.3	53.20	47.0	3 bara 133.5°C	-15	54.20	36.7	65.10	60.8
	-10	40.20	29.0	50.50	50.0		-10	52.20	40.7	62.60	64.3
	-5	38.10	32.7	47.90	52.9		-5	50.20	44.7	60.00	67.6
	0	36.10	36.4	45.30	55.8		0	48.20	48.6	57.50	70.9
	+5	34.10	40.0	42.60	58.5		+5	46.20	52.4	55.00	74.0
	+10	32.10	43.5	40.10	61.2		+10	44.20	56.2	52.50	77.1
	+15	30.10	47.0	38.10	64.5		+15	42.30	60.0	50.10	80.2
130/90	-15	45.70	28.6	57.70	52.2	5 bara 151.2°C	-15	61.30	43.4	73.40	70.5
	-10	43.60	32.4	54.90	55.2		-10	59.10	47.5	70.80	74.1
	-5	41.50	36.1	52.20	58.2		-5	57.10	51.5	68.20	77.5
	0	39.50	39.8	49.60	61.1		0	55.10	55.5	65.60	80.9
	+5	37.40	43.4	47.00	64.0		+5	53.00	59.5	63.10	84.2
	+10	35.40	47.0	44.40	66.7		+10	51.00	63.4	60.60	87.4
	+15	33.30	50.5	42.90	70.7		+15	49.10	67.2	58.10	90.5

ZADRŽAVAMO SVA AUTORSKA PRAVA


HEATER
KALORIFER
КАЛОРИФЕР
H 11.000

TIP KALORIFERA:	H 11.142		H 11.143		TIP KALORIFERA:	H 11.242		H 11.243		
KOLIČINA VAZDUHA:	3600m ³ /h		3100m ³ /h		KOLIČINA VAZDUHA:	3600m ³ /h		3100m ³ /h		
TOPLA VODA t _u (°C)	Q (kW)	t _i (°C)	Q (kW)	t _i (°C)	PARA	t _u (°C)	Q (kW)	t _i (°C)	Q (kW)	t _i (°C)
80/60	-15	42.10	15.7	54.70	1.1 bara 102,3°C	-15	58.80	27.8	79.60	43.0
	-10	39.40	19.2	51.00		-10	56.10	31.6	75.80	46.2
	-5	37.40	23.3	47.40		-5	53.40	35.4	72.00	49.5
	0	34.60	26.7	44.40		0	50.70	39.0	68.30	52.6
	+5	31.80	30.0	40.90		+5	48.00	42.7	64.50	55.6
	+10	29.10	33.2	37.40		+10	45.40	46.2	60.90	58.6
	+15	26.40	36.4	33.90		+15	42.70	49.7	57.20	61.5
90/70	-15	47.80	19.7	61.70	1.5 bara 111.4°C	-15	63.50	31.3	86.00	47.6
	-10	44.90	23.3	57.90		-10	60.80	35.1	82.10	50.9
	-5	42.20	26.8	54.30		-5	58.00	38.9	78.30	54.2
	0	39.40	30.3	50.00		0	55.30	42.6	74.50	57.4
	+5	37.30	34.2	47.60		+5	52.60	46.3	70.70	60.5
	+10	34.50	37.6	44.10		+10	50.00	49.9	67.00	63.5
	+15	31.80	40.9	40.60		+15	47.30	53.4	63.30	66.5
110/70	-15	52.00	22.8	67.7	2 bara 120.2°C	-15	68.30	34.7	92.40	52.2
	-10	49.20	26.5	65.10		-10	65.50	38.6	88.40	55.6
	-5	46.30	30.0	61.30		-5	62.70	42.4	84.60	58.9
	0	43.50	33.5	57.60		0	60.00	46.2	80.70	62.2
	+5	42.10	38.0	53.90		+5	57.30	49.9	76.90	65.3
	+10	39.20	41.3	50.30		+10	54.50	53.6	73.10	68.4
	+15	36.40	44.6	46.70		+15	51.90	57.1	69.40	71.4
110/90	-15	58.20	27.4	75.00	3 bara 133.5°C	-15	75.20	39.8	101.80	59.1
	-10	56.00	31.5	71.30		-10	72.40	43.7	97.80	62.5
	-5	53.20	35.2	67.40		-5	69.60	47.6	93.80	65.9
	0	50.30	38.7	64.30		0	66.80	51.5	89.90	69.2
	+5	47.40	42.2	60.60		+5	64.00	55.2	86.00	72.5
	+10	44.70	45.7	57.00		+10	61.30	59.0	82.20	75.6
	+15	41.90	49.0	53.40		+15	58.60	62.6	78.40	78.7
130/90	-15	63.30	31.1	81.90	5 bara 151.2°C	-15	85.00	46.9	114.80	68.6
	-10	60.40	34.8	78.00		-10	82.00	50.9	110.70	72.1
	-5	57.50	38.5	74.20		-5	79.20	54.9	106.60	75.6
	0	54.60	42.1	70.40		0	76.30	58.8	102.60	79.1
	+5	51.90	45.7	66.70		+5	73.50	62.7	98.70	82.4
	+10	49.00	49.1	64.00		+10	70.70	66.5	94.80	85.7
	+15	46.20	52.5	60.30		+15	68.00	70.2	90.90	88.9

Preduzeće za proizvodnju, inženjering, projektovanje, konsalting, zastupanje i marketing d.o.o.

YU-Beograd, Borivoja Stevanovića 43 Tel/Fax: /011/4897 425



HEATER KALORIFER КАЛОРИФЕР

H 11.000

TIP KALORIFERA:	H 11.152		H 11.153		TIP KALORIFERA:	H 11.252		H 11.253			
KOLIČINA VAZDUHA:	5050m ³ /h		4150m ³ /h		KOLIČINA VAZDUHA:	5050m ³ /h		4150m ³ /h			
TOPLA VODA t _u (°C)	Q (kW)	t _i (°C)	Q (kW)	t _i (°C)	PARA	t _u (°C)	Q (kW)	t _i (°C)	Q (kW)	t _i (°C)	
80/60	-15	58.60	15.4	73.30	31.3	1.1 bara 102,3°C	-15	80.90	27.0	97.10	46.3
	-10	54.70	18.9	69.10	34.4		-10	77.10	30.8	92.30	49.4
	-5	50.80	22.4	64.20	37.1		-5	73.40	34.5	87.70	52.5
	0	47.90	26.3	59.40	39.6		0	69.70	38.3	83.10	55.5
	+5	44.00	29.6	55.20	42.6		+5	66.00	41.9	78.50	58.4
	+10	40.30	32.9	50.50	45.0		+10	62.40	45.5	74.00	61.3
	+15	36.50	36.1	45.80	47.3		+15	58.70	49.0	69.60	64.0
90/70	-15	66.20	19.4	82.20	36.9	1.5 bara 111.4°C	-15	87.40	30.3	104.80	51.2
	-10	62.30	23.0	77.70	40.0		-10	83.50	34.2	100.00	54.4
	-5	58.50	26.5	72.80	42.8		-5	79.80	38.0	95.30	57.5
	0	54.60	30.0	68.60	45.8		0	76.00	41.8	90.60	60.5
	+5	50.80	33.4	63.70	48.3		+5	72.30	45.5	86.00	63.5
	+10	47.70	37.2	58.90	50.8		+10	68.70	49.1	81.50	66.4
	+15	44.00	40.5	54.80	53.6		+15	65.00	52.7	77.00	69.2
110/70	-15	71.90	22.3	91.40	42.7	2 bara 120.2°C	-15	93.90	33.7	112.50	56.1
	-10	69.40	26.7	86.40	45.6		-10	90.00	37.6	107.70	59.3
	-5	65.50	30.3	82.50	49.1		-5	86.30	41.5	102.90	62.5
	0	61.60	33.8	77.50	51.7		0	82.50	45.3	98.20	65.6
	+5	57.60	37.2	72.60	54.4		+5	78.70	49.0	93.50	68.6
	+10	53.80	40.6	67.60	56.8		+10	75.00	52.7	88.90	71.6
	+15	49.90	43.9	62.80	59.3		+15	71.30	56.3	84.40	74.5
110/90	-15	80.90	27.0	101.00	48.8	3 bara 133.5°C	-15	103.40	38.7	124.00	63.2
	-10	76.90	30.7	96.30	52.0		-10	99.60	42.7	119.00	66.6
	-5	73.00	34.3	91.20	54.8		-5	95.70	46.6	114.10	69.9
	0	69.10	37.9	85.70	57.3		0	91.90	50.5	109.30	73.0
	+5	65.90	41.8	81.30	60.3		+5	88.10	54.3	104.50	76.1
	+10	62.00	45.3	76.40	62.9		+10	84.40	58.0	99.90	79.2
	+15	58.10	48.7	71.70	65.5		+15	80.60	61.7	95.20	82.1
130/90	-15	87.50	30.4	110.40	54.7	5 bara 151.2°C	-15	116.80	45.6	139.70	73.2
	-10	83.50	34.1	105.30	57.8		-10	112.80	49.7	134.70	76.7
	-5	79.60	37.9	100.20	60.7		-5	108.90	53.7	129.70	80.1
	0	75.60	41.5	95.00	63.5		0	105.00	57.7	124.80	83.4
	+5	71.70	45.1	90.10	66.3		+5	101.20	61.6	119.90	86.6
	+10	69.00	49.3	86.10	69.6		+10	97.30	65.4	115.10	89.7
	+15	65.10	52.7	81.20	72.2		+15	93.50	69.2	110.40	92.8

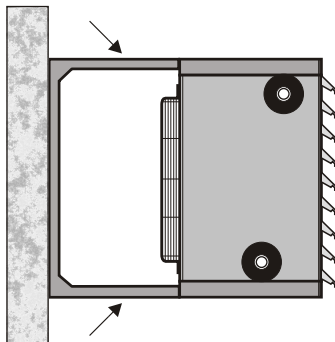
ZADRŽAVAMO SVA AUTORSKA PRAVA

INSTALLATION

PRIMERI UGRADNJE

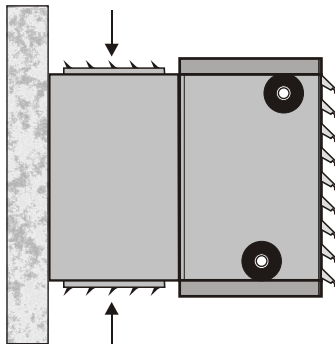
ПРИМЕРЫ УСТАНОВКИ

RAD SA OPTICAJNIM
VAZDUHOM



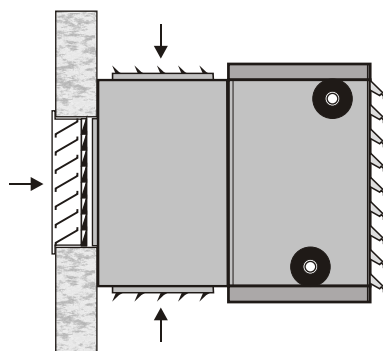
KALORIFER: H11.000

RAD SA OPTICAJNIM
VAZDUHOM



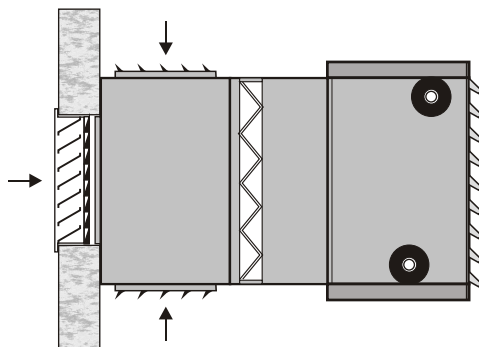
KALORIFER: H11.000
MEŠAČKA KUTIJA: H12.000

RAD SA SVE@IM
I OPTICAJNIM
VAZDUHOM



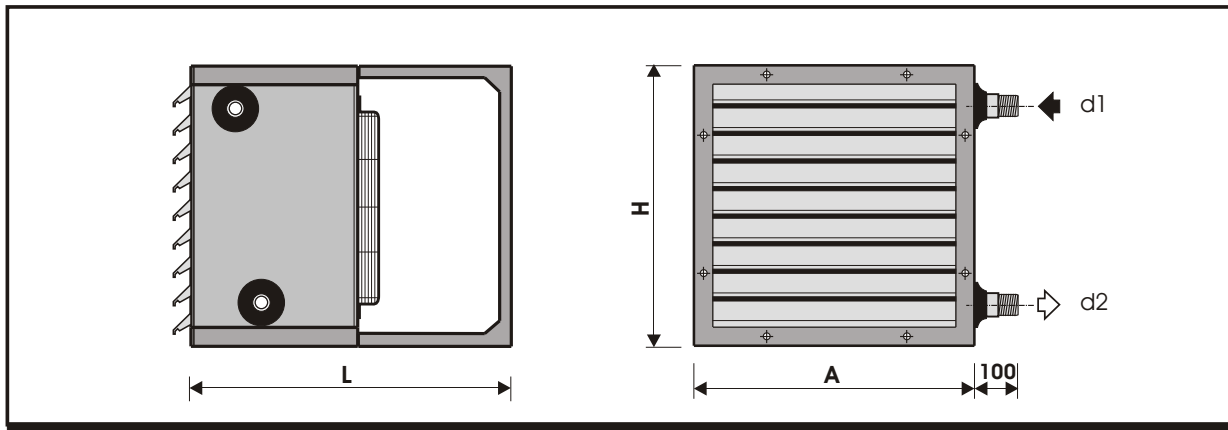
KALORIFER: H11.000
MEŠAČKA KUTIJA: H13.000
SPOLJNA ŽALUZINA: H14.000

RAD SA SVE@IM
I OPTICAJNIM
VAZDUHOM



KALORIFER: H11.000
PRODUŽETAK: H15.000
FILTER: H16.000
MEŠAČKA KUTIJA: H13.000
SPOLJNA ŽALUZINA: H14.000

MEASURING SKETCH & DIMENSIONS
MERNA SKICA I DIMENZIJE
 ИЗМЕРИТЕЛЬНАЯ СХЕМА И РАЗМЕРЫ



TIP KALORIFERA	SNAGA (kW)	NOMINALNA STRUJA PRI 220V (A)	BROJ OBRTAJA (o/min)	NIVO ZVUČ. PRITISKA (dBA)	DIMENZIJE(mm)					TEŽINA (kg)
					A(mm)	H(mm)	L(mm)	d1(“)	d2(“)	
H 11.112	0.07	0.30	1310	52	400	400	550	3/4	3/4	16
H 11.212	0.07	0.30	1310	52	400	400	550	1	3/4	16
H 11.122	0.15	0.70	1310	54	450	450	550	3/4	3/4	20
H 11.222	0.15	0.70	1310	54	450	450	550	5/4	3/4	20
H 11.132	0.20	1.30	1345	56	550	550	600	1	1	26
H 11.232	0.20	1.30	1345	56	550	550	600	5/4	1	26
H 11.142	0.24	1.55	1375	59	650	650	600	1	1	35
H 11.242	0.24	1.55	1375	59	650	650	600	6/4	1	35
H 11.152	0.37	1.60	1375	60	750	750	600	1	1	40
H 11.252	0.37	1.60	1375	60	750	750	600	6/4	1	40

NAPOMENA: Dimenzije trorednih kalorifera su iste kao i dimenzije dvorednih koje su date u tabeli.
 Težine trorednih kalorifera treba uvećati za 10% u odnosu na težine dvorednih kalorifera.
 Elektromotori kalorifera 112, 122 su monofazni za napon 220V.
 Elektromotori kalorifera 132, 142, 152 su trofazni za napon 380V.